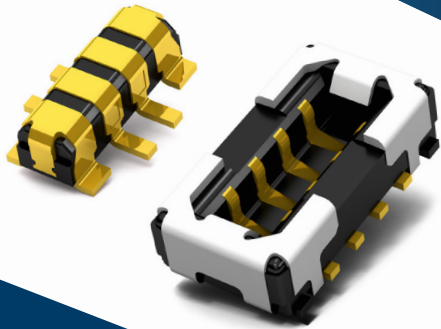


Board to FPC narrow pitch connector R35K series

Panasonic
INDUSTRY



Single row terminal for 49% mounting space reduction

Wearable devices has to be as small as possible. When it comes to connectors for batteries, side switches or various sensor modules, R35K series benefits from its single side terminal structure. Result is an incomparable easy wiring that saves up to 49% PCB space. Even in this small size R35K adapts the unique TOUGH CONTACT technology for highest device reliability.

Key Features

- 4 pins and 6 pins
- Low profile, 0.6mm mated height
- Power terminal 3A / pin contact
- Signal terminal 0.3A / pin contact
- 30V AC/DC
- Double contact with a simple lock structure
- High shock & vibration resistance



Wearables

- Patient monitoring
- Smart watches
- AR / VR glasses



Hearable devices

- Earphones
- Entertainment



Energy

- Energy harvesting
- Battery charging



For further Information, please contact info@eu.panasonic.com